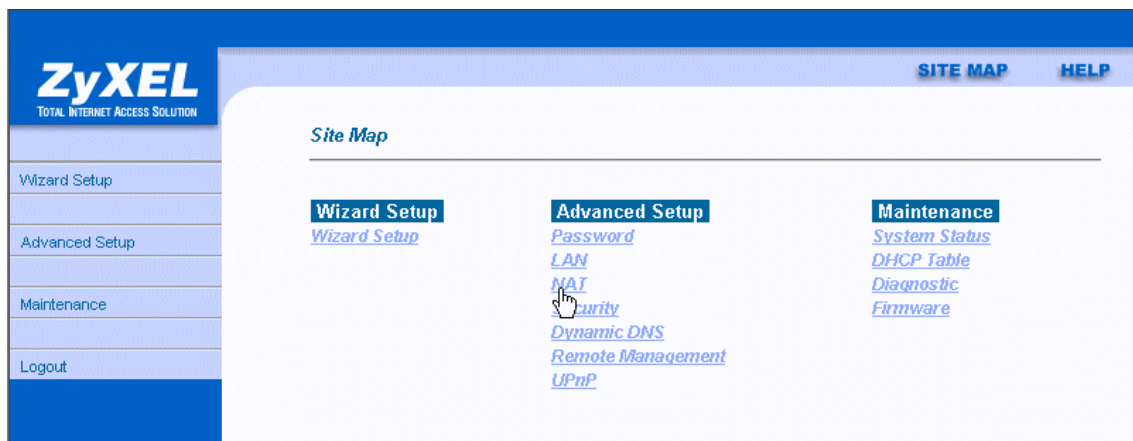


1. Choisissez le menu „NAT“ sur le Web-GUI configurateur.



2. Cliquez sur „Full Feature“, puis sur „Edit Details“.

NAT - Mode

Network Address Translation

None

SUA Only

Full Feature

[Edit Details](#)

[Edit Details](#)



3. Cliquez maintenant sur le premier Rule.

NAT - Address Mapping Rules

	Local Start IP	Local End IP	Global Start IP	Global End IP	Type
Rule 1	-
Rule 2	-
Rule 3	-
Rule 4	-
Rule 5	-
Rule 6	-
Rule 7	-
Rule 8	-
Rule 9	-
Rule 10	-

Configuration du serveur WEB

4. Placez l'adresse local IP de votre serveur WEB et l'adresse publique. Cliquez sur „Apply“.

NAT - Edit Address Mapping Rule 1

Type	<input type="text" value="One-to-One"/>
Local Start IP	<input type="text" value="192.168.1.2"/>
Local End IP	<input type="text" value="N/A"/>
Global Start IP	<input type="text" value="212.10.10.2"/>
Global End IP	<input type="text" value="N/A"/>
Server Mapping Set	<input type="text" value="N/A"/> Edit Details

5. Allez sur le deuxième Rule.

NAT - Address Mapping Rules

	Local Start IP	Local End IP	Global Start IP	Global End IP	Type
Rule 1	192.168.1.2	...	212.10.10.2	...	1-1
Rule 2	-
Rule 3	-
Rule 4	-
Rule 5	-
Rule 6	-
Rule 7	-
Rule 8	-
Rule 9	-
Rule 10	-

Configuration du serveur FTP

6. Placez l'adresse local IP de votre serveur FTP et l'adresse publique. Cliquez sur „Apply“.

NAT - Edit Address Mapping Rule 2

Type	One-to-One
Local Start IP	192.168.1.3
Local End IP	N/A
Global Start IP	212.10.10.3
Global End IP	N/A
Server Mapping Set	N/A Edit Details

7. Choisissez le troisième Rule.

NAT - Address Mapping Rules

	Local Start IP	Local End IP	Global Start IP	Global End IP	Type
Rule 1	192.168.1.2	...	212.10.10.2	...	1-1
Rule 2	192.168.1.3	...	212.10.10.3	...	1-1
Rule 3	-
Rule 4	-
Rule 5	-
Rule 6	-
Rule 7	-
Rule 8	-
Rule 9	-
Rule 10	-

Configuration du Terminal-Serveur et PCAnywhere-Host

8. Prenez comme „Type“ le mode „Server“, placez l’adresse publique, puis cliquez sur „Edit Details“.

NAT - Edit Address Mapping Rule 3

Type	Server
Local Start IP	N/A
Local End IP	N/A
Global Start IP	212.10.10.4
Global End IP	N/A
Server Mapping Set	2 Edit Details

9. Placez les ports pour les serveurs Terminal et PCAnywhere ainsi que les adresses privées.

NAT - Edit SUA/NAT Server Set

	Start Port No.	End Port No.	IP Address
1	All ports	All ports	0.0.0.0
2	3389	3389	192.168.1.4
3	5631	5632	192.168.1.5
4	0	0	0.0.0.0
5	0	0	0.0.0.0
6	0	0	0.0.0.0
7	0	0	0.0.0.0
8	0	0	0.0.0.0
9	0	0	0.0.0.0
10	0	0	0.0.0.0
11	0	0	0.0.0.0
12	0	0	0.0.0.0

10. Cliquez sur „Apply“ pour sauver la configuration.

NAT - Edit Address Mapping Rule 3

Type	Server
Local Start IP	N/A
Local End IP	N/A
Global Start IP	212.10.10.4
Global End IP	N/A
Server Mapping Set	2 Edit Details

11. Cliquez sur le quatrième Rule

NAT - Address Mapping Rules

	Local Start IP	Local End IP	Global Start IP	Global End IP	Type
Rule 1	192.168.1.2	...	212.10.10.2	...	1-1
Rule 2	192.168.1.3	...	212.10.10.3	...	1-1
Rule 3	212.10.10.4	...	Server
Rule 4	-
Rule 5	-
Rule 6	-
Rule 7	-
Rule 8	-
Rule 9	-
Rule 10	-

12. Avec le Type „Many-to-One“, vous donnez la possibilité à tous les autres PCs d’accéder à Internet. L’adresse Global 0.0.0.0 représente l’adresse publique du Prestige 650 (212.10.10.1). Cette option est seulement pour la sortie.

NAT - Edit Address Mapping Rule 4

Type	Many-to-One
Local Start IP	0.0.0.0
Local End IP	255.255.255.255
Global Start IP	0.0.0.0
Global End IP	N/A
Server Mapping Set	N/A Edit Details

Apply Reset Delete

13. Choisissez maintenant le menu „Security“

The screenshot shows the ZyXEL web interface. On the left is a navigation menu with 'Security' highlighted. The main content area displays a table of NAT rules.

	Local Start IP	Local End IP	Global Start IP	Global End IP	Type
Rule 1	192.168.1.2	...	212.10.10.2	...	1-1
Rule 2	192.168.1.3	...	212.10.10.3	...	1-1
Rule 3	212.10.10.4	...	Server
Rule 4	...	255.255.255.255	M-1
Rule 5	-
Rule 6	-
Rule 7	-
Rule 8	-
Rule 9	-
Rule 10	-

14. Déactivez les filtres „FTP“ et „Web“, sinon vos serveurs FTP et Web ne seront pas accessibles de l'extérieur. N'oubliez pas de cliquer sur « Apply ».

Internet Security

Your device provides the following filter rules

<input checked="" type="checkbox"/> Telnet	Telnet traffic is blocked from the WAN to the LAN
<input type="checkbox"/> FTP	FTP traffic is blocked from the WAN to the LAN
<input checked="" type="checkbox"/> TFTP	TFTP traffic is blocked from the WAN to the LAN
<input type="checkbox"/> Web	Web traffic is blocked from the WAN to the LAN
<input checked="" type="checkbox"/> SNMP	SNMP traffic is blocked from the WAN
<input type="checkbox"/> Ping	Ping traffic is blocked from the WAN
