

# P-2612HNU-F3

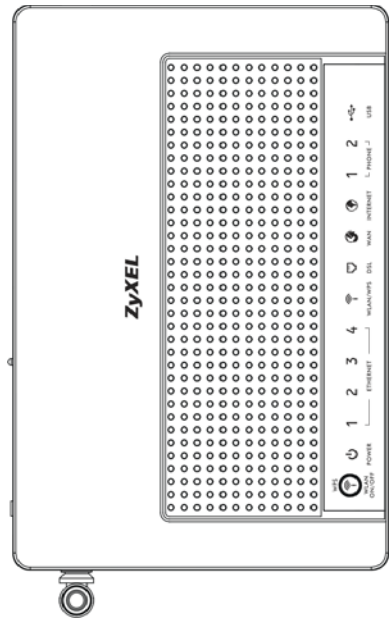
## Quick Start Guide

Dual WAN ADSL2+ IAD with  
802.11n Wireless

Firmware V3.00  
Edition 1, 1/2010

### DEFAULT LOGIN DETAILS

IP Address:	http://192.168.1.1
User Login:	User Name: user Password: 1234
Administrator Login:	User Name: admin Password: 1234

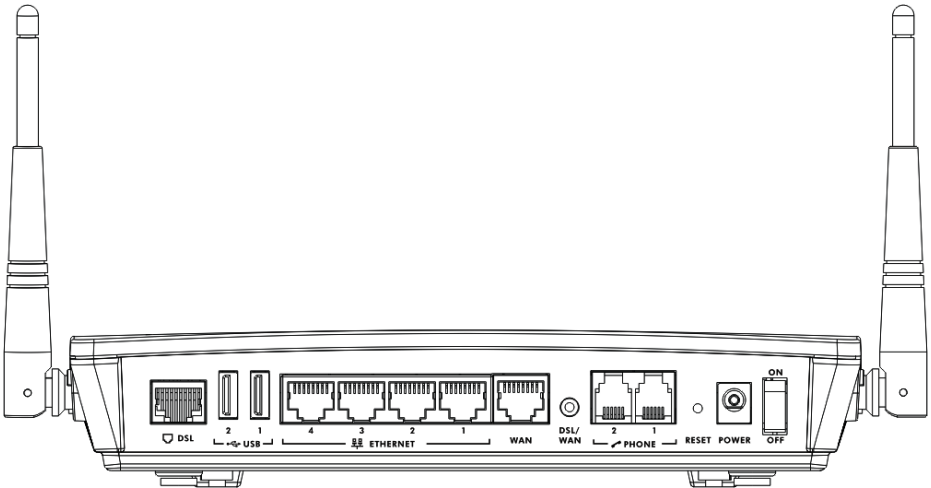


# ZyXEL

# Device Panels



↑  
WLAN LED  
↑  
POWER  
↑  
ETHERNET  
LED  
↑  
WLAN  
LED  
↑  
DSL  
LED  
↑  
WAN  
LED  
↑  
INTERNET  
LED  
↑  
PHONE 1, 2  
LEDS  
↑  
USB  
LED



↑  
DSL  
PORT  
↑  
USB  
PORTS  
↑  
ETHERNET  
PORTS  
↑  
WAN  
PORT  
↑  
DSL/WAN  
↑  
PHONE  
PORTS  
↑  
RESET  
↑  
POWER  
ON/OFF

# Overview

The P-2612HNU-F3 is an ADSL Integrated Access Device (IAD) which combines high-speed ADSL Internet access, a built-in switch, a firewall and high-speed wireless networking capability. It also has a USB 2.0 port for sharing files via a USB compatible storage device and two phone ports for making calls over the Internet (Voice over IP or VoIP). The P-2612HNU-F3 can also function as a print server.



## Requirements

Make sure you have the following things before you start.

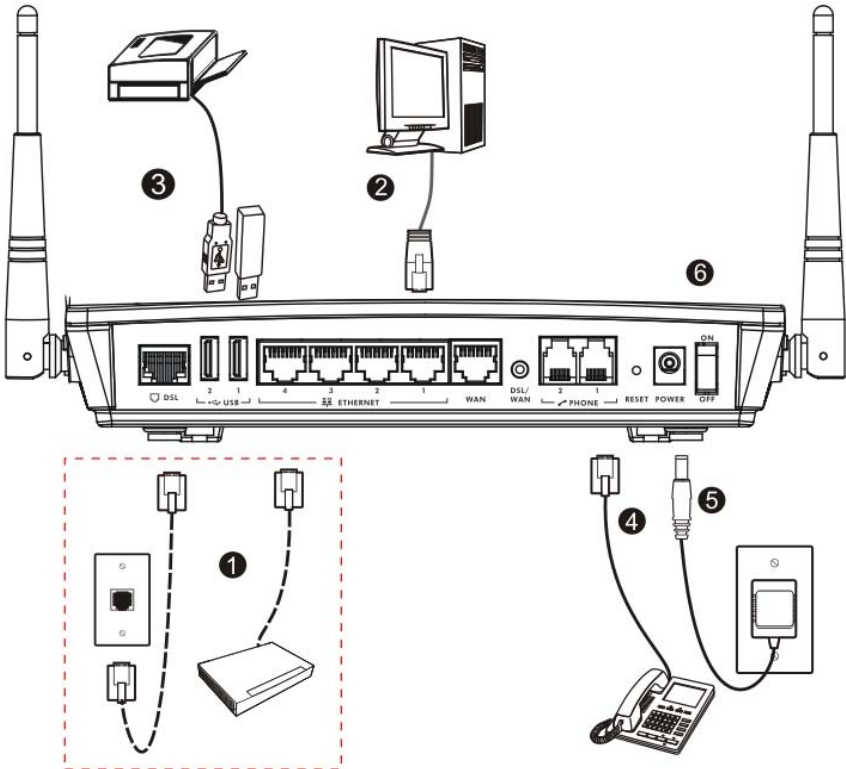
- Internet access - account information provided by your ISP, such as user name, password, and so on.
- VoIP account - You need the account information provided by your VoIP service provider (the company that lets you make phone calls over the Internet).

- Internet Explorer 6.0 or later or Netscape Navigator 7.0 or later, with JavaScript enabled.

See the *User's Guide on the CD* for all configuration details including setting up a shared printer.

## Hardware Connections

**Remove the P-2612HNU-F3's plastic cover before using it.**



1. Do one of the following for your Internet connection:
  - a. **DSL:** Use a telephone wire to connect this port to a telephone jack (or the **DSL** or **MODEM** jack on a splitter, if you have one).
  - b. **WAN:** If you have a DSL router or modem already in your network or you want to use a cable modem, push the **DSL/WAN** switch to the **WAN** side and use an Ethernet cable to connect this port to an Ethernet jack with Internet access.
2. **ETHERNET:** Use an Ethernet cable to connect a computer to one of these ports for initial configuration and/or Internet access.
3. **USB 2.0:** Connect a USB (version 2.0 or lower) memory stick or a USB hard drive for file sharing. The P-2612HNU-F3 automatically detects the USB device. Alternatively, use a USB cable (not provided) to connect a USB (version 2.0 or lower) printer to this port.
4. **PHONE:** Use a telephone cable (and any telephone adaptor provided with your P-2612HNU-F3) to connect a telephone to the **PHONE 1** or **PHONE 2** port. If you only have one telephone, you should use port 1.
5. Use the power adaptor provided with your P-2612HNU-F3 to connect an appropriate power source to this socket.
6. Push the power button to the on position.

Look at the LEDs (lights) on the top panel of the P-2612HNU-F3.



- The **POWER** light blinks during start-up and is green once the P-2612HNU-F3 is ready.
- An **ETHERNET** light turns on if the corresponding **ETHERNET** port is properly connected. An Ethernet port's light blinks when the P-2612HNU-F3 is sending or receiving data through it.
- The **WLAN** light stays green when the wireless LAN is ready. It blinks when the P-2612HNU-F3 is sending/receiving data through the wireless LAN.
- The **DSL** light stays on if a physical DSL connection exists and blinks when transmitting data.

The **WAN** light stays on if this port is properly connected and blinks when transmitting data.

The **INTERNET** light is green when Internet access is available.

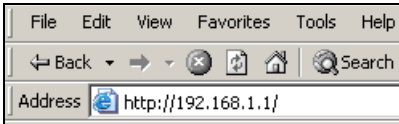
- The **PHONE** lights stay on when your SIP account is registered and they blink if the receiver is off the hook.
- The **USB** light turns on when there is a USB device (printer or memory stick) connected to the P-2612HNU-F3 and blinks when transmitting data.



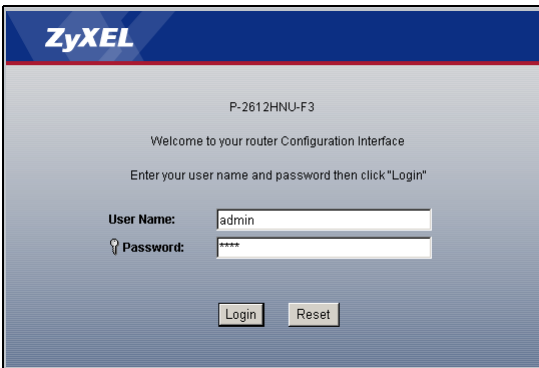
If no lights are on, check your connections. Make sure that you have the power adaptor connected to the P-2612HNU-F3 and plugged in to an appropriate power source. Make sure the power source is turned on. Turn the P-2612HNU-F3 off, wait for a few seconds and turn it back on. If the LEDs are still off, contact your local vendor.


# Log into the Web Configurator

1. Open your browser and enter **http://192.168.1.1** (the P-2612HNU-F3's default IP address) as the address.



2. For administrator login, enter username **admin** and password **1234** (default). Only administrators can configure the SIP account settings. For user login, enter **user** as the username and **1234** as the password. Click **Login**.

A screenshot of the ZyXEL P-2612HNU-F3 login screen. The page has a blue header with the "ZyXEL" logo. Below the header, the text "P-2612HNU-F3" is displayed. The main content area is light gray and contains the following text: "Welcome to your router Configuration Interface" and "Enter your user name and password then click 'Login'". There are two input fields: "User Name:" with the value "admin" and "Password:" with the value "\*\*\*\*". Below the input fields are two buttons: "Login" and "Reset".

 If the login screen does not open, make sure you allow web browser pop-up windows, JavaScripts and Java permissions. Your computer should be also set to get an IP address automatically from a DHCP server. See the appendices in your User's Guide for more information.

See your User's Guide for how to use the **VoIP > SIP** screen to set up your VoIP account if the **INTERNET** light is green but the **PHONE** light is off.

If the **PHONE** light is on, skip to [Using Your Phones](#) on page 13 to see how to make calls through the Internet.

See your User's Guide for how to use the **Network > WAN** screen to set up the WAN connection:

- If the **DSL/WAN** switch is set to **DSL** and the **DSL** light is on but the **INTERNET** light is off.
- If the **DSL/WAN** switch set to **WAN** and the **WAN** light is on but the **INTERNET** light is off.

## Set Up a Wireless Network

---

To set up a wireless network you need at least one wireless network card/adaptor.

- If you have a desktop computer, use either a wireless USB adapter or a wireless PCI adapter.
- If you have a laptop, use either a wireless USB adapter or a wireless CardBus card. These are built into many laptops.

## Setting Up a Wireless Network with WPS

If your wireless devices display the WPS logo, you can use Wi-Fi Protected Setup (WPS) to add wireless devices to your wireless network. If your wireless devices do not display the WPS logo, go to [Set Up a Wireless Network Manually](#) on page 11 to manually set up a wireless network.



The P-2612HNU-F3 supports two WPS methods for creating a secure connection.

- **Push Button Configuration** - create a secure wireless network simply by pressing the P-2612HNU-F3's physical WPS button. See [Push Button Configuration](#) on page 9.
- **PIN Configuration** - create a secure wireless network by entering your wireless device's PIN (Personal Identification Number) into the configuration screen of the P-2612HNU-F3. See [PIN Configuration](#) on page 10.

*You must use the same method on the P-2612HNU-F3 and the wireless client.*

### **Push Button Configuration**

1. Place a WPS-enabled device that is installed in your system and supports the WPS Push Button method within range of the P-2612HNU-F3.
2. Press the **WLAN** button on the P-2612HNU-F3's top panel for five seconds.



3. Use the WPS-enabled device's WPS button. It can be either a button in the utility or a physical button. See the device's documentation if you cannot locate the WPS button. It doesn't matter which button is pressed first. You must press the second button within two minutes of pressing the first one.
4. The P-2612HNU-F3 and the wireless device establish a secure connection. This can take up to two minutes.

5. Congratulations! Your computer is now ready to connect to the Internet wirelessly through your P-2612HNU-F3.

### **PIN Configuration**

1. Place a WPS-enabled device that is installed in your computer and supports the WPS PIN configuration method within range of the P-2612HNU-F3.
2. Log into the P-2612HNU-F3's web configurator at <http://192.168.1.1> (see [Log into the Web Configurator](#) on page 7 for more details on this).
3. In the **Status** screen click **Network** in the left panel then click **Wireless LAN**. In the **Wireless LAN** screen click the **WPS Station** tab.
4. Enter the PIN of the other WPS-enabled device into the **Input Station's PIN number** text box and click **Start**. You can locate this PIN number in the other device's utility or on the device itself. See the other device's documentation if you cannot locate the PIN.

General Security QoS WPS **WPS Station** Scheduling Association List

**Add Station by WPS**

Click the below **Push Button** to add WPS stations to wireless network.

Push Button

Or input station's PIN number:  Start

**Note:**

1. The Push Button Configuration requires pressing a button on both the station and AP within 120 seconds.
2. You may find the PIN number in the station's utility.

5. Click **Start** or **Apply** in the other device's utility screen within two minutes of clicking **Start** in the P-2612HNU-F3 web configurator screen.
6. The P-2612HNU-F3 and the other WPS-enabled device establish a secure connection. This can take up to two minutes.
7. Congratulations! Your computer is now ready to connect to the Internet wirelessly through your P-2612HNU-F3.

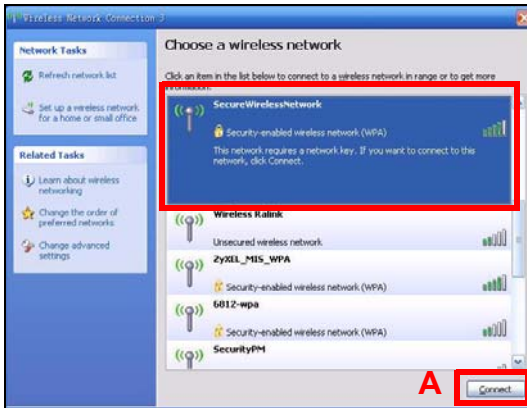
## Set Up a Wireless Network Manually

Configure wireless devices to use the same wireless settings as the P-2612HNU-F3. If you didn't configure the P-2612HNU-F3's wireless settings, use the wireless SSID (network name) and WPA-PSK encryption key on the P-2612HNU-F3's rear panel. The connection procedure is shown here using Windows XP as an example.

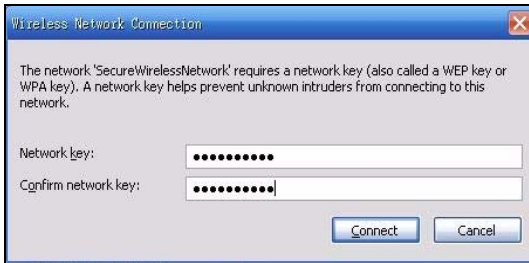
1. Right-click the wireless adapter icon which appears in the bottom right of your computer monitor. Click **View Available Wireless Networks**.



2. Select the P-2612HNU-F3's **SSID** name and click **Connect (A)**. The SSID "SecureWirelessNetwork" is given here as an example.



3. You are prompted to enter a password. Enter it and click **Connect**.



4. You may have to wait several minutes while your computer connects to the wireless network.
5. You should now be securely connected wirelessly to the P-2612HNU-F3.



Congratulations! Your computer is now ready to connect to the Internet wirelessly through your P-2612HNU-F3.



If you cannot connect wirelessly to the P-2612HNU-F3, check you have selected the correct **SSID** and entered the correct security key. If that does not work, ensure your wireless network adapter is enabled by clicking on the wireless adapter icon and clicking **Enable**. See the User's Guide for more suggestions.

## *Using Your Phones*

---

Follow these directions to make calls over the Internet.

- To dial a SIP number that only uses numbers (for example, "12345"), dial the number on your phone's keypad. You can also set up a speed-dial entry, if you want. See the User's Guide for instructions.
- To dial a SIP number that uses letters, set up a speed-dial entry first. See the User's Guide for instructions. Then, dial the speed-dial number to make the call.
- To call regular telephone numbers, use your VoIP service provider's dialing plan.
- For call forward service, contact your service provider to know if they support this feature.

## European Flash Key Commands

Command	Sub-command	Description
Flash		Put a current call on hold to place a second call. Switch back to the call (if there is no second call).
Flash	0	Drop the call presently on hold or reject an incoming call which is waiting for answer.
Flash	1	Disconnect the current phone connection and answer the incoming call or resume with caller presently on hold.
Flash	2	<ol style="list-style-type: none"><li>1. Switch back and forth between two calls.</li><li>2. Put a current call on hold to answer an incoming call.</li><li>3. Separate the current three-way conference call into two individual calls (one is on-line, the other is on hold).</li></ol>
Flash	3	Create three-way conference connection.
Flash	*98#	Transfer the call to another phone.

## Phone Functions Summary

Keys	Function	Description
*98#	Call transfer	Transfer a call to another phone.
*92#	Call return	Place a call to the last person who called you.
*95#	Enable Do Not Disturb	Use these to set your phone not to ring when someone calls you, or to turn this function off.
#95#	Disable Do Not Disturb	
*43#	Enable call waiting	Use these to allow you to put a call on hold while answering another, or to turn this function off.
#43#	Disable call waiting	
*21*	Uncondition Forward Activate	Forward all incoming calls. This feature must be supported by your service provider before it can be enabled.
#21#	Uncondition Forward Deactivate	Disable forwarding for incoming calls.
*61*	No Answer Forward Activate	Forward incoming calls if you do not answer. This feature must be supported by your service provider before it can be enabled.
#61#	No Answer Forward Deactivate	Disable forwarding for incoming calls if you do not answer.
*67*	Busy Forward Activate	Forward calls if you are already making a call. This feature must be supported by your service provider before it can be enabled.
#67#	Busy Forward Deactivate	Disable forwarding incoming calls if you are already making a call.

Keys	Function	Description
#31#	One Shot Caller ID Display	Activate call waiting on the next call only.
*31*	One Shot Caller ID Hidden	Deactivate call waiting on the next call only.

To call into the phone that is attached to the P-2612HNU-F3, use your VoIP service provider's dialing plan.

## USB File Sharing

---

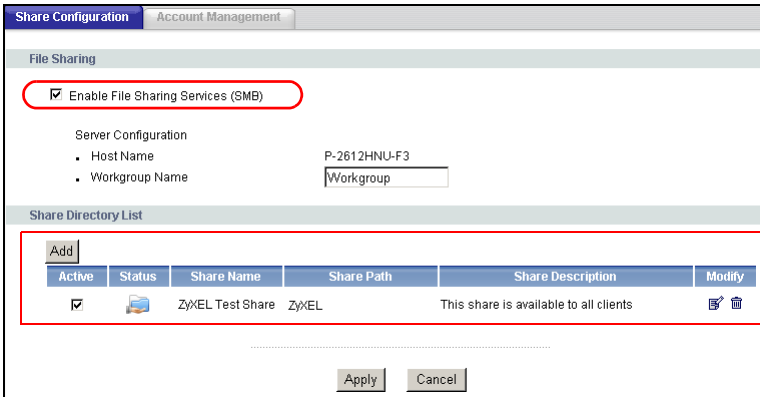
This section shows you how to enable USB file sharing. In order to start file sharing you need to:

- Connect your USB 2.0 file sharing device. See [Hardware Connections](#).
- Enable the file sharing feature.
- Create an account (user name and password) for sharing the files.
- Browse to your files using the IP address of the P-2612HNU-F3.

### Configure USB File Sharing

1. Click **Advanced > File Sharing**.

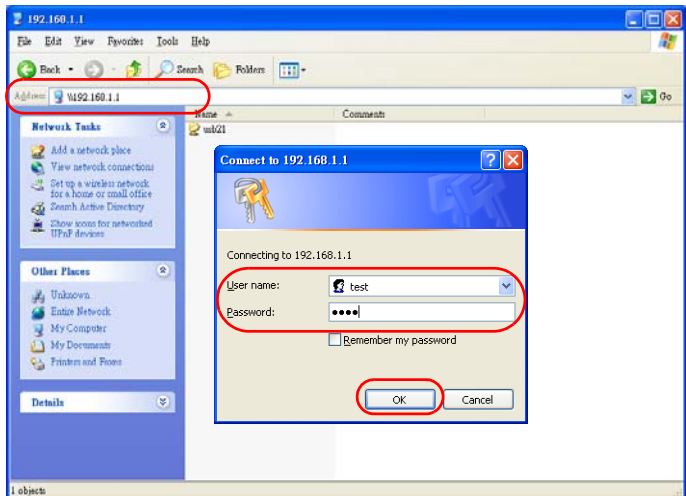
## 2. Check the box **Enable File Sharing Services** and click **Apply**.



The P-2612HNU-F3 automatically recognizes the USB device which is connected to the USB port and makes it available for sharing (shown in the figure above).

## Browse to the USB File Share

1. In Windows Explorer's **Address** bar type a double backslash “\\” followed by the IP address of the P-2612HNU-F3 (192.168.1.1 is the default) and hit [ENTER].



2. Enter the user name and password in the window prompt that appears and hit **OK**.
3. The files on the USB file sharing device connected to the P-2612HNU-F3 are now part of your file structure and you can manage those files just like any other files on your computer.

*Refer to the User's Guide for a complete description of this feature.*

## Viewing Your Product's Certifications

1. Go to [www.zyxel.com](http://www.zyxel.com).
2. Select your product from the drop-down list box on the ZyXEL home page to go to that product's page.
3. Select the certification you wish to view from this page.