

# ZYXEL



## PLA5256

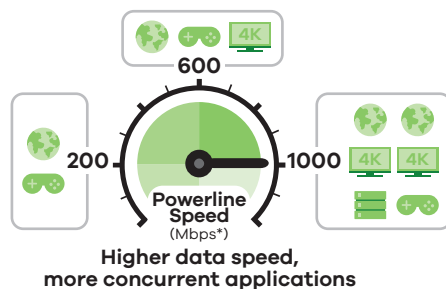
### 1000 Mbps Powerline Pass-Thru 2-Port Gigabit Ethernet Adapter

You have a wired network device in another room that needs Internet connection, but you don't want the mess running a long Ethernet cable to it? Grab a Zyxel PLA5256, 1000 Mbps Powerline Pass-Thru 2-Port Gigabit Ethernet Adapter. The PLA5256 utilizes the latest HomePlug AV2 technology that delivers wired speed of up to 1000 Mbps\* through your power outlets — great for streaming HD video contents or playing intensive multiplayer online games. The PLA5256 features two Ethernet ports, making it perfect for connecting living room network devices such as set top boxes or video game consoles. With the convenient pass-through power outlet design, it doesn't block the existing wall power outlets from other devices that require it.

### Benefits

#### Enhanced performance and range for smooth HD streaming

Build a wired with latest HomePlug AV2 up to 1000 Mbps\* speed, with the Zyxel PLA5256 to stream high-definition videos without hitches or stuttering. The flexibility provided by the two Gigabit Ethernet ports allows you to simultaneously connect to the Internet and stream media to a pair of devices like game consoles, PCs, smart TVs, NAS and printers.



Up to 1000 Mbps powerline over latest technology for smooth HD video playback



Two Gigabit Ethernet ports to connect up to two devices



Pass-through design returns you a power outlet



Built-in Quality of Service (QoS) ensures the best networking experience for your devices



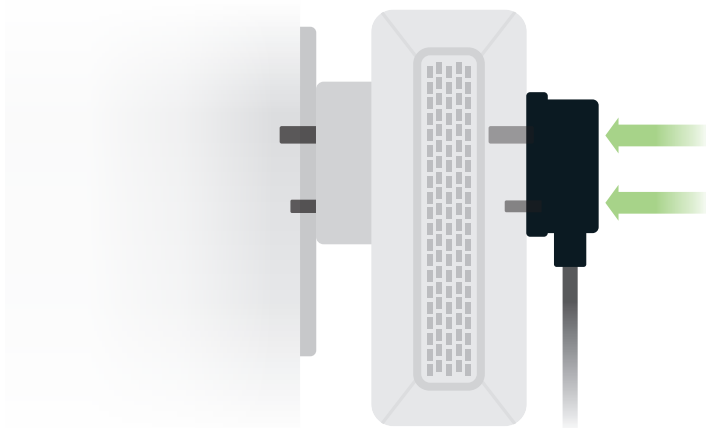
Color LED indicator lights notify you of powerline network performance



Compliance with the existing IEEE 1901 and HomePlug AV technologies

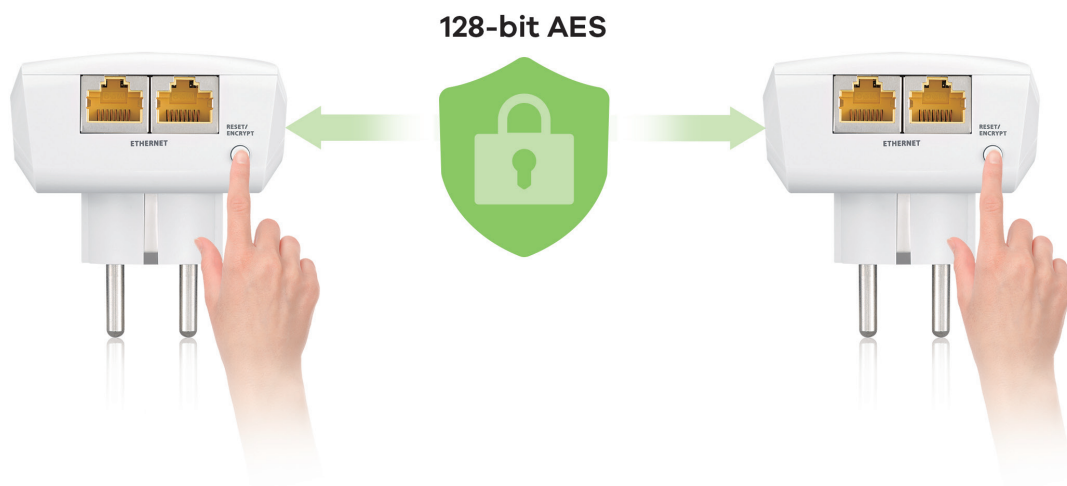
### Convenient pass-through design returns you a power outlet

The Zyxel PLA5256 doesn't block power outlets but offers a pass-through outlet instead, which allows you to keep the existing powered devices connected. The embedded noise filter eliminates static from connected electronics to further improve network quality.



### 128-bit AES encryption for network protection

Keep snooping eyes at bay with the advanced end-to-end 128-bit AES encryption built into the Zyxel PLA5256. It prevents users outside of your network from entering your personal local network.



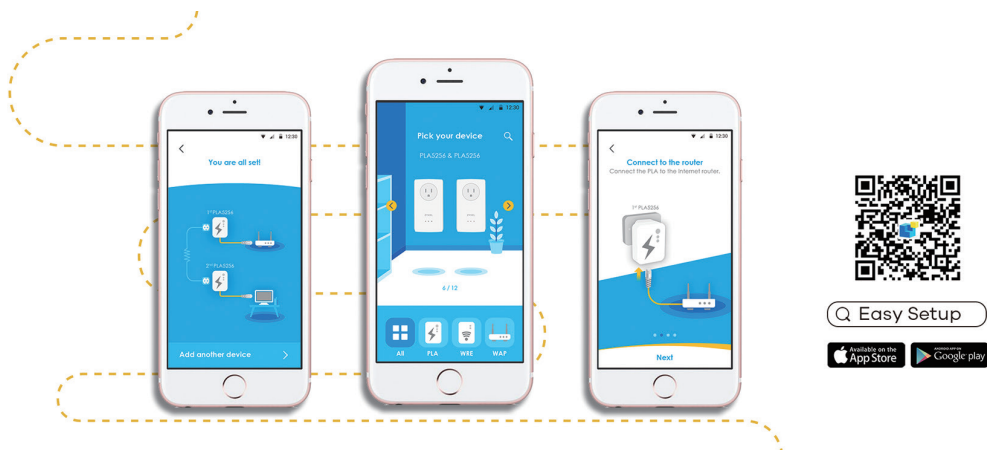
### Quality-of-Service for unparalleled networking performance

The Zyxel PLA5256 allocates proper bandwidth automatically for the powerline network to fully utilize your bandwidth. Get the unparalleled networking experience with extremely easy, straightforward setup.

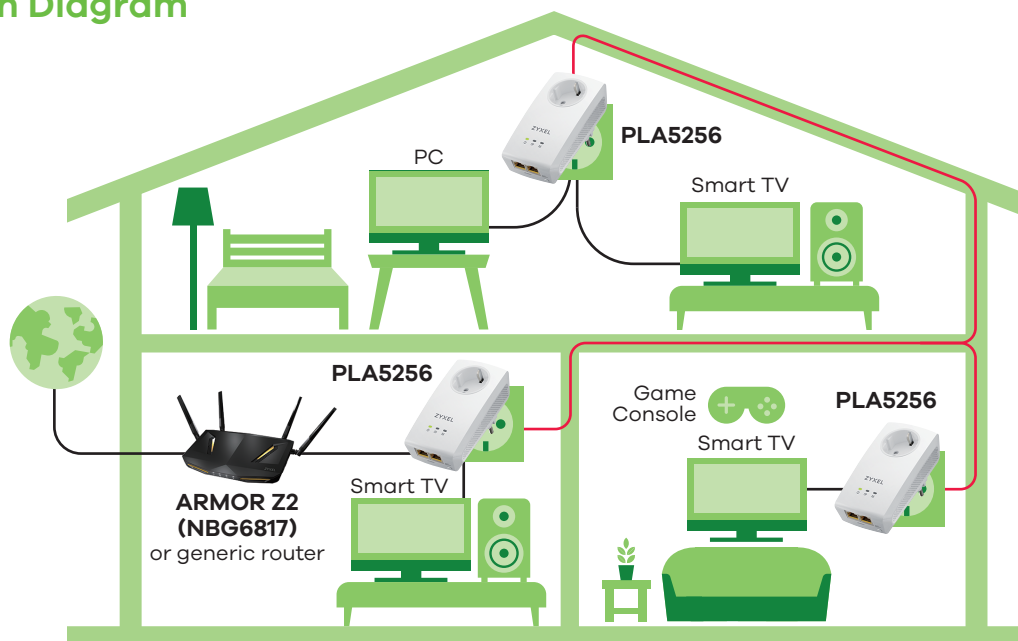


## Install powerline easily with Zyxel Easy Setup app guide

Get your Zyxel PLA5256 Powerline network up and running with Zyxel Easy Setup app, available on both iOS and Android. Use your smartphone or tablet with the app to get a visual guide on connecting your Powerline adapters to your network devices.



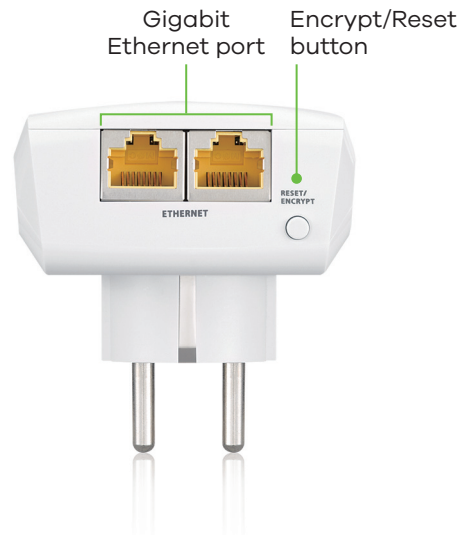
## Application Diagram



## Front Panel



## Rear Panel



# Specifications

## System Specifications

### Standard

- Compliant with HomePlug AV2
- IEEE 1901 and HomePlug AV standard

### Powerline Data Rate

- Transmit: up to 1000 Mbps\*
- Receive: up to 1000 Mbps\*

### Access Methods

- CSMA/CA channel-access schemes

### HomePlug Modulation

- OFDM symbol modulation
- QAM 4096/1024/256/64/16
- QPSK, BPSK, ROBO carrier modulation schemes

### Range

- Max. range up to 300 meters over power line

### Security

- 128-bit AES encryption

### Quality of Service (QoS)

- Supports up to 4-level type QoS

### Frequency Band

- 2 MHz to 86 MHz

### IGMP

- IGMP v1/v2/v3

### System Requirements

- Operating system independent:
  - Ethernet: RJ-45
- Utility software OS support:
  - Microsoft Windows XP/Vista/7/8/10

## Hardware Specifications

- Ethernet interface: Two 10/100/1000 Mbps RJ-45 connectors with auto MDI/MDIX support
- LED indicators:
  - Power on/off
  - Powerline network quality:
    - Green: Best
    - Amber: Better
    - Red: Good
  - Ethernet link/activity
- Button:
  - Encrypt/Reset button
- Power rating: 100 to 240V AC, 50/60 Hz
- Power consumption:
  - Full operation: 5.5 watt max.
- Socket/Connector:



EU outlet  
(15A Max. 250V)

- Type F (CEE 7/4)/Type F (CEE 7/4) DE, NL, ES, PT, AT, SE, FI, NO, GR, HU, LU



CH outlet  
(10A Max. 250V)

- Type J (SEV 1011)/Type J (SEV 1011) CH



UK outlet  
(13A Max. 250V)

- Type G (BS 1363)/Type G (BS 1363) 1011) UK, CY, HK



US outlet  
(15A Max. 120V)

- Type B (NEMA 5-15)/Type B (NEMA 5-15)/TW, US

## Physical Specifications

### Single

- Item dimensions (WxDxH):  
125 x 65 x 42 mm  
(4.92" x 2.56" x 1.65")
- Item weight: 256 g (0.56 lb.)
- Packing dimensions (WxDxH):  
215 x 143 x 95 mm  
(8.46" x 5.63" x 3.74")
- Packing weight: 465 g (1.02 lb.)

### Twin

- Item dimensions (WxDxH):  
125 x 65 x 42 mm  
(4.92" x 2.56" x 1.65")
- Item weight: 512 g (1.12 lb.)
- Packing dimensions (WxDxH):  
215 x 143 x 95 mm  
(8.46" x 5.63" x 3.74")
- Packing weight: 717 g (1.58 lb.)

## Environmental Specifications

### Operating Environment

- Temperature:  
0°C to 40°C (32°F to 104°F)
- Humidity:  
10% to 90% (Non-condensing)

### Storage Environment

- Temperature:  
-30°C to 70°C (-22°F to 158°F)
- Humidity:  
10% to 95% (Non-condensing)

## Certification

- Safety: CE-LVD, BSMI
- EMC: CE, FCC, ICES, BSMI

## Package Contents

### Single

- 1 powerline Ethernet adapter
- 1 Ethernet cable
- Quick start guide (including warranty form)

### Twin

- 2 powerline Ethernet adapters
- 2 Ethernet cables
- Quick start guide (including warranty form)

\* The theoretical maximum channel data transfer rate is derived from HomePlug AV2 specifications. Actual data transfer rate will vary from network environment including: distance, network traffic, noise on electrical wires, quality of electrical installation and other adverse conditions.

For more product information, visit us on the web at [www.zyxel.com](http://www.zyxel.com)

Copyright © 2017 Zyxel Communications Corp. All rights reserved. Zyxel, Zyxel logo are registered trademarks of Zyxel Communications Corp. All other brands, product names, or trademarks mentioned are the property of their respective owners. All specifications are subject to change without notice.

Datasheet [PLA5256](#)



5-100-00217007 05/17