

# ZyXel ZON Utility

## ZyXel One Network Utility

The inevitable challenge for small- and medium-size businesses deploying a network is that networking devices like switches or WiFi APs come with a static default IP address for management or need to configure a DHCP environment for these devices. That means network administrators need to take time and patience to power up and then assign IP addresses to dozens of devices. To streamline this inefficient, time-consuming process, the ZyXel One Network (ZON) utility breaks the common approach with an user-friendly interface to help administrators to easily deploy and assign IPs for devices across different product ranges such as WiFi APs, switches and gateways with one single platform. The ZyXel ZON utility greatly simplifies setup process to save invisible expense for businesses.

## Benefits

### Streamline the initial setup process

Today, administrators have to power up each device to change IP settings repeatedly, or use several utilities or heavy NMS to deploy a network as well as to add new devices to the current network. The ZON utility not only enables auto-discovery of ZyXel devices across different product ranges instantly, but also displays detailed device information once it is plugged to the infrastructure. Additionally, the ZON Utility can detect availability of the latest device firmware and it allows on-line upgrades to ensure network reliability. This new breakthrough allows network setup through the single-point interface that significantly reduces complexity and time spent on repetitive settings.



Designed with an intuitive user interface to facilitate deployments and initial setup of network devices



Using one single platform to assign new IPs and upgrade firmware for WiFi access points (APs), switches and gateways



Working with ZyXel AP Configurator (ZAC) for further configuration of WLAN access points

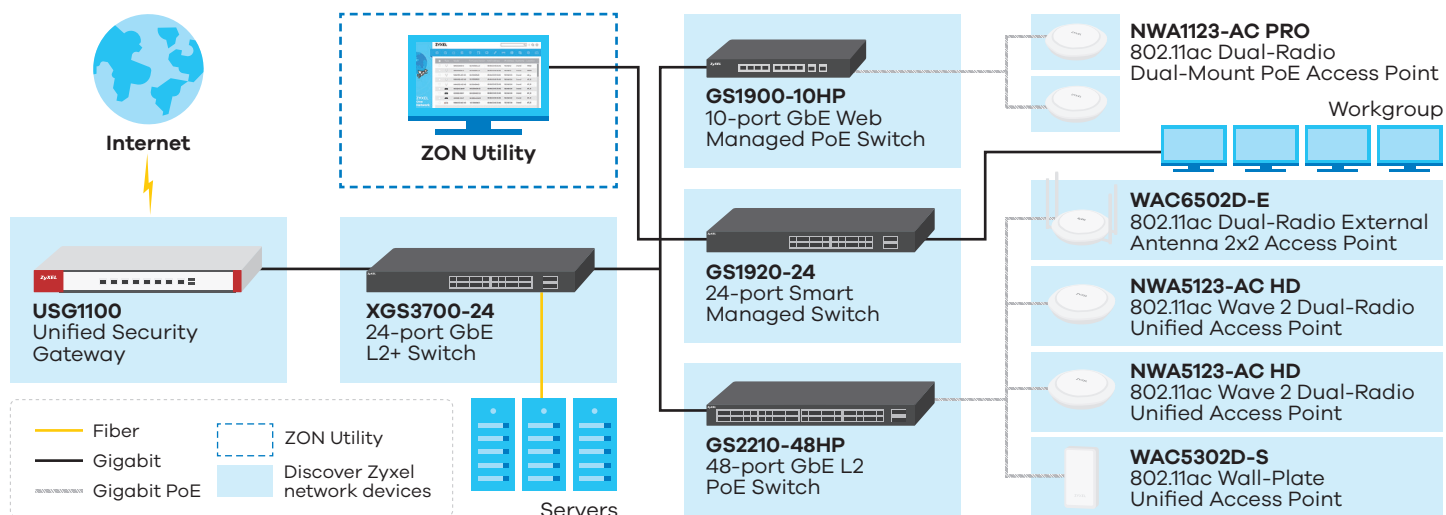
## Single-point management

With a large number or increasing devices on the network, management becomes complicated and time-consuming. The ZON utility features smart functions to assist network management for administrators to perform batch firmware upgrade for devices, remote reboot of devices such as ceiling APs or redirect to device GUI for further configuration with just a click. These troublesome but necessary management tasks can now be easily done through just one platform for WiFi APs, switches and gateways.

## Smart, true integration

The ZON utility not only eases the initial setup and future management for devices, but also brings access point information to the ZAC with just one click on a button of the ZON utility; with which administrators can configure multiple AP profiles including SSID, security, RADIUS, MAC filter and L2 isolation centrally. The seamless integration between ZON utility and ZAC facilitates network device management and the entire AP setup process.

## Application Diagram



## Features

### Device Configuration

- Configurable DHCP client mode or static IP mode
- Assign IP address and subnet mask, and gateway address
- Set up DNS server
- Set up system name
- Set up device location info

### Management and Maintenance

- Discover devices
- Configure IP address
- Renew DHCP IP
- Reboot device
- Device locator
- Web GUI redirection
- Batch firmware upgrade
- Change password
- Secured administration protection
- Export discovered device list to ease inventory management

- **New for v2.1.0** Automatic detection of the latest firmware for on-the-fly device upgrades
- **New for v2.1.0** The GUI displays device serial number and hardware version for easy inventory management
- **New for v2.1.0** Effortless display panel customization through simple drag-and-drop
- **New for v2.1.0** Cloud mode on/off option added for the upcoming Hybrid AP Series

## Supported Models

The ZON utility supports Zyxel networking products, including WLAN controllers, WiFi APs, switches, gateways and security appliances with the latest firmware. Please visit the ZON utility product page on [www.zyxel.com](http://www.zyxel.com) for a detailed list of the supported models.

## System Requirements

### Hardware

- Intel® Core® i3 processor or above
- 2 GB RAM or above
- 100 MB free hard disk or above
- Ethernet or WiFi network adapter
- SuperVGA (1280x800) or above display

### Operating System

- Windows® 7 (32-bit/64-bit)
- Windows® 8 (32-bit/64 bit)
- Windows® 8.1 (32-bit/64-bit)
- Windows® 10 (32-bit/64 bit)

For more product information, visit us on the web at [www.zyxel.com](http://www.zyxel.com)

Copyright © 2018 Zyxel Communications Corp. All rights reserved. Zyxel, Zyxel logo are registered trademarks of Zyxel Communications Corp. All other brands, product names, or trademarks mentioned are the property of their respective owners. All specifications are subject to change without notice.

Datasheet [Zyxel ZON Utility](#)

