



- Symmetrical high-speed Internet access
- Auto detection to support EFM or ATM with single device
- End-to-end connectivity
- IPSec VPN

EFM/ATM Auto-detect 4-wire G.SHDSL.bis Gateway

Benefits

Symmetrical high-speed Internet access

P-793H v2 is a high performance G.SHDSL.bis gateway for small/medium office to have Internet access and LAN-to-LAN application over the existing copper line. P-793H v2 makes full use of the advanced G.SHDSL.bis technology, its symmetric transmission data rate can be up to 11.4 Mbps.

Auto detection to support EFM or ATM with single device

P793H v2 is a G.SHDSL.bis gateway with high flexibility to support ether ATM mode or EFM mode providing high-speed LAN-to-LAN connection and Internet access for small business or branch offices through G.SHDSL.bis connection over the copper line.

Point-to-Point connectivity

User can set up point to point connection between two P793H v2 devices. The connections offer a cost-effective, high-speed connection for high bandwidth applications such as video conferencing and distance learning.

IPSec VPN

IPSec VPN is a standards-based VPN that offers flexible solutions for secure data communications across a public network like the Internet.

P-793H v2 G.SHDSL.bis Bonded Broadband Gateway





P-793H v2 G.SHDSL.bis Bonded Broadband Gateway

Specifications

System Specifications

Routing/Bridge Support

- IP (RFC 791) routing is supported
- TCP, UDP, ICMP, IGMP v1 and v2, ARP, RIP v1, RIP v2
- Transparent bridging (IEEE 802.1D)
- PPP BCP (RFC 3185) support

G.SHDSL.bis

- Support ITU-T G991.2/G.994.1 standards
- Support ITU-T G.998.1 (G.bond)
- Support IPOA/IPOE
- TC-PAM line modulation
- Configurable as either server or client mode
- EFM/ATM auto detection
- OAM IEEE 802.3 chapter 57 compliant
- IEEE 802.3 2Base-TL (aka 802.3ah) compliant
- Rate negotiating/manually rate adaptation configuration
- 2-wire and 4-wire mode auto detect in either ATM mode and EFM mode
- Data rate selections:
From 192 kbps to 5,700 kbps (2-wire mode)
- Data rate selections:
From 192 kbps to 11,400 kbps (4-wire mode)
- Support bonding based on EFM and SHDSL with ATM
- WAN dial backup

ATM Support

- Multiple protocols over AAL5 (RFC1483)
- PPP over ATM (RFC 2364)
- ATM AAL5 supported
- Support 8 PVCs
- ATM forum UNI 3.0/4.0 PVC
- OAM F4/F5 loopback, RDI, AIS
- UBR CBR, and nrt-VBR traffic shaping

EFM Support

- EFM mode compliant to IEEE 802.3, G.998.2
- PPP over Ethernet (RFC2516)
- Support of OAM PDU information and

functionality (ITU-T Y.1731)

- OAMPDU event notification, variable request, variable response, loopback control
- VLAN base QOS (802.1P/Q)

Internet Access Sharing

- NAT/SUA, 2048 NAT sessions
- Port restricted cone NAT
- SIP ALG pass-through
- NAT server (Port forwarding)
- Multi-to-Multi NAT
- Dynamic DNS (www.dyndns.org)
- DHCP server/client/relay

Security

- User authentication (PAP, CHAP) with PPP (RFC 1334, RFC 1994)
- Stateful packet inspection firewall
- Content filter
- Prevent denial of service
- Access control of service
- Real-time attack alert and log

Network Management

- Web-based configuration
- Command-line interface
- Password-protected Telnet support
- SNMP MIB I/MIB II support
- TFTP & FTP firmware upgrade and configuration backup
- TR-069 HTTPPS

VPN

- IPSec VPN support
- 10 VPN tunnels
- IKE/manual key
- DES/3DES/AES encryption
- MD5/SHA1 authentication
- FQDN
- NETBIOS pass-through for IPSec
- IPSec VPN keep-alive
- IPSec NAT traversal
- Self-diagnostic

Others

- DNS proxy
- UNIX syslog

Hardware Specifications

- 1 RJ-11 interface for 4-wire G.SHDSL.bis WAN port
- 4 auto-sensing 10M/100M Ethernet LAN ports (RJ-45)
- Reset button
- RJ-45 Con port for console management

Physical Specifications

- Item weight: 250 g (0.55 lb)
- Item dimensions:
181 (W) x 128 (D) x 37 (H) mm
(7.12 (W) x 5.04 (D) x 1.46 (H) inches)
- Packing weight: 325 g (0.72 lb)
- Packing dimensions:
359 (W) x 145 (D) x 58 (H) mm
(14.13 (W) x 5.71 (D) x 2.28 (H) inches)

Environmental Specifications

Operating Environment

- Temperature: 0°C to 40°C
- Humidity: 20% to 90% RH

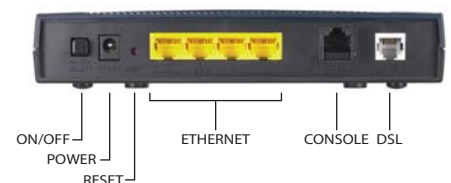
Storage Environment

- Temperature: -20°C to 60°C (-4°F to 149°F)
- Humidity: 20% to 95% RH

Certification

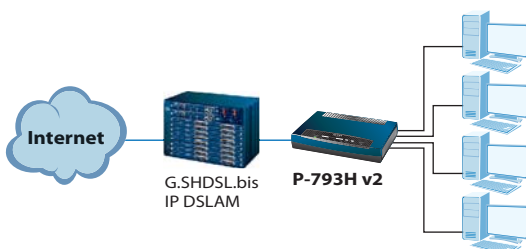
- CE

Rear Panel

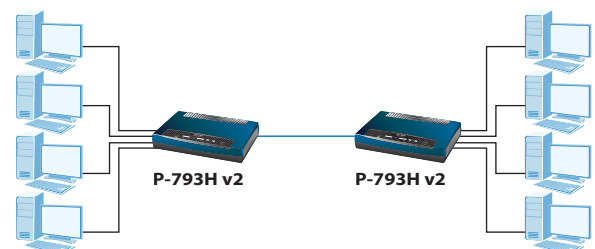


Application Diagram

Connection to G.SHDSL.bis IP DSLAM



Extra-LAN



For more product information, visit us on the web at www.ZyXEL.com

