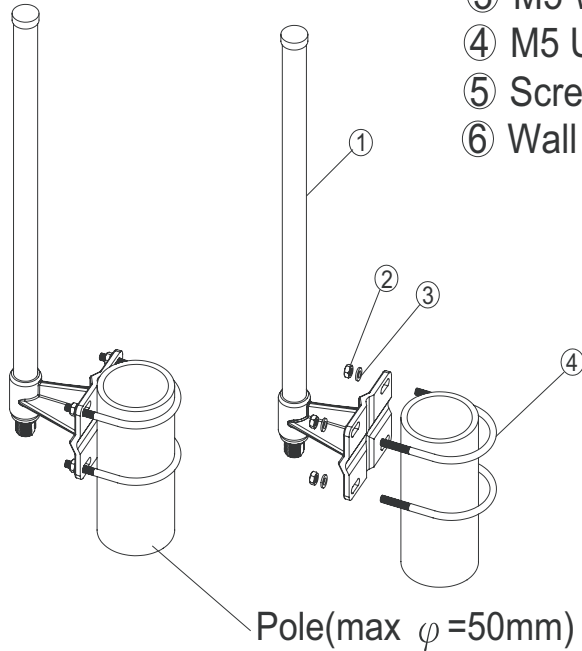


ANT3108

Mounting Configuration

Pole-Mounting



① Antenna body	x1
② M5-0.8 nut	x4 (Pole-Mounting Only)
③ M5 Washer	x4 (Pole-Mounting Only)
④ M5 U-Type Screw	x2 (Pole-Mounting Only)
⑤ Screw	x4 (Wall-Mounting Only)
⑥ Wall Plug	x4 (II-Mounting Only)

Wall-Mounting

