



USG LITE 60AX

Dual-WAN Security Router

The USG LITE 60AX is an award-winning, all-in-one security router built for small offices, remote branches, home-office setups and MSPs needing a scalable, easy-to-deploy solution.

It delivers business-grade security with advanced protection features including ransomware defense, application control, traffic inspection, content filtering and automated VPN support.

Benefits

Intelligence-Driven Threat Protection

Delivers intelligence-driven protection that continuously adapts to emerging threats, helping small businesses reduce risk without added complexity. With real-time threat intelligence and business-grade security built in, USG LITE 60AX provides dependable protection that scales with everyday network needs. Advanced threat protection features are included with the Elite Pack for the first year.



Real-time threat intelligence at wire-speed



Dual-WAN for smart traffic distribution and flexible routing



Dual 2.5GbE ports for speeds beyond gigabit



Centralized VPN orchestrator for simplified multi-site management



Simplified setup and manage with Nebula app



Constructed with 95% recycled plastics



Speed. Security. Simplicity.
Meet the USG LITE 60AX

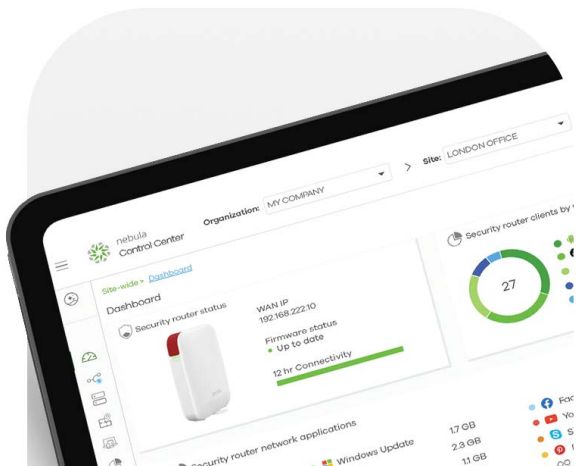


nebula

Advanced security with real-time threat intelligence

The USG LITE 60AX combines advanced firewall technologies with real-time, cloud-based threat intelligence to safeguard your network against evolving cyberattacks - including ransomware threats.

- Real-time threat intelligence and Ransomware defense
- Application insight and control
- Web filtering and traffic log archiving for up to 1 year
- Filter internet traffic based on its country of origin



Secure connections. Zero complexity.

Designed for scalable MSPs/SMBs and remote branches, the USG LITE 60AX provides flexible, secure connectivity without complicated setup.

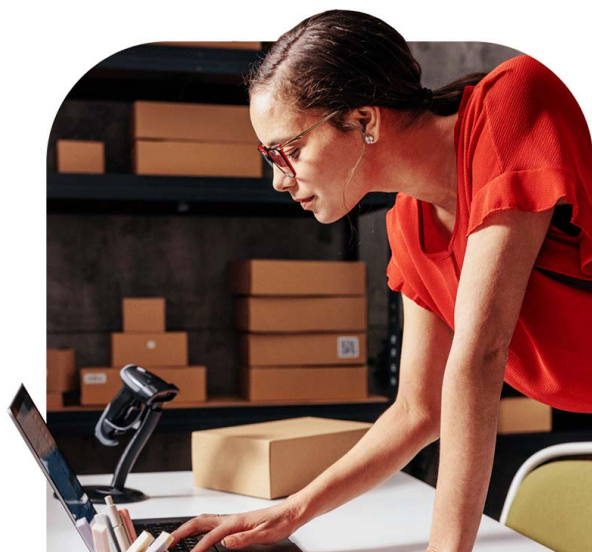
With Nebula VPN Orchestrator, you can easily manage multi-location VPN networks from a single interface – saving significant time and effort.



Redundancy that never misses a beat

Keep your business connected 24/7 with the USG LITE 60AX's resilient dual-WAN architecture and multi-gigabit performance. Dual 2.5mGig ports enable high-speed throughput, flexible connections for smart load balancing, and automatic failover – so your network stays up even if one link drops.

- Dual-WAN with load balancing and policy routing
- Flexible WAN/LAN port assignment for maximum deployment versatility
- High-speed dual 2.5mGig ports for enhanced bandwidth and smooth traffic management



Click. Tap. Done.

Get up and running in minutes with the Nebula mobile app. With just a few simple clicks, our user-friendly step-by-step wizard walks you through the entire installation process, no technical expertise required.

Once connected, the intuitive interface gives you complete control, making it easy to adjust settings, monitor performance and manage your network anytime, anywhere.

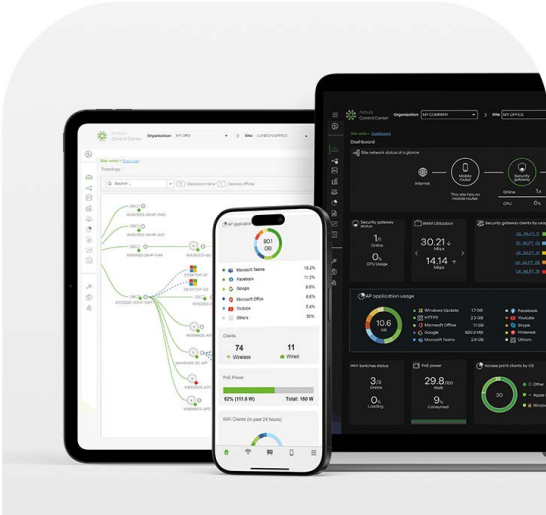
Search: Zyxel Nebula Mobile



Powerful, effortless and scalable connectivity

Nebula is a centralized cloud platform for unified management of wireless, switching, security, and FWA devices.

It enables fast remote deployment without additional controllers, while providing real-time monitoring, alerts, and complete network visibility across single or multiple sites.



WiFi 6 speed, mesh simplicity

The USG LITE 60AX delivers WiFi 6 performance with dual-band connectivity.

Its smart mesh technology automatically connects with Nebula **access points** for easy wireless expansion without complex cabling, while built-in business-grade security ensures continuous protection.



Complimentary one-year Elite Pack

The Elite Pack license delivers comprehensive web filtering across more than 120 categories and millions of domains, while activating advanced Nebula Pro features and strengthening ransomware protection through Zyxel's cloud-based security technologies. A one-year license is included at no extra cost, and renewal is simple to ensure continuous protection.



Performance with a smaller footprint

The USG LITE 60AX is designed with sustainability at its core, using up to 95% post-consumer recycled (PCR) plastics in its chassis. Packaging has also been reduced by 36.7%, color sleeves removed, and all box printing uses 100% halogen-free or soy-based inks. These eco-focused improvements allow 47.7% more units per pallet, lowering transportation impact and significantly reducing our overall carbon footprint.




Ultimate Protection and Control for Today's Networks

All the integrated security, performance, and cloud management built on next-generation technologies to protect, connect, and simplify even the most demanding SMB networks.

 **Core Firewall**


- Quad-core architecture & Fastpath
- Dual-WAN redundancy
- Firewall
- Country restriction
- Traffic log archiving

 **Wireless Made Easy**


- Mesh to any Nebula AP
- Site-wide SSID provisioning from Nebula cloud
- Captive portal

 **Advanced security with real-time threat intelligence at wire-speed**

- Inspect DNS queries
- Ransomware & malware protection
- Deep packet inspection to identify applications
- Web filtering
- Threat report


 **Nebula centralized cloud management**

- Unified management of wireless, switching, security, and mobile router
- Fast remote deployment without additional controllers
- Pre-configure without unboxing
- Network Topology
- Network Visibility
- Client info

 **Auto VPN**

- IKEv2 site-to-site VPN
- Remote access VPN
- Auto provisioning from Nebula
- Real-time VPN topology

Elite Pack Comparison

	Elite Pack 	Subscription Free
Real-time threat intelligence	●	
Web Filtering (Content Filter)	●	
SecuReporter Traffic Log Archiving	●	
Nebula Pro Pack - Advanced feature set	●	
Ransomware / malware prevention	●	●
Intrusion Blocker	●	●
Dark Web Blocker	●	●
Stop mail fraud & phishing	●	●
Block Ads	●	●
Block VPN proxy	●	●
Firewall	●	●
Country Restriction (GeoIP)	●	●
Custom allowed / blocked domain	●	●
Traffic management (applications & clients)	●	●

Core Firewall

Essential security and control for protecting and managing your network traffic.

Quad-core architecture & Fastpath

Optimizes traffic forwarding with a quad-core CPU and Fastpath acceleration, reducing processing overhead and ensuring stable performance for everyday cloud and network applications.

Dual-WAN redundancy

Provides continuous internet connectivity through dual-WAN failover, automatically switching traffic to a backup link when the primary connection is unavailable.

Firewall

Protects the network by enforcing security policies that control and inspect traffic between internal and external networks.

Country restriction

Improves network protection by restricting inbound and outbound traffic based on geographic IP location, helping reduce exposure to region-based threats.

Traffic log archiving

Sending traffic logs to SecuReporter for historical review and basic analysis, enabling administrators to monitor usage patterns and ensure regulatory compliance.

Advanced security with real-time threat intelligence at wire-speed

Advanced protection that detects, analyzes, and controls threats in real time, delivering deep visibility and security across web, application, and network traffic without compromising performance.

Inspect DNS queries

Inspects DNS queries to help identify and control domain access, providing basic visibility into DNS-based activity and reducing potential exposure to malicious destinations.

Ransomware & malware protection

Provides protection against known ransomware and malware threats by inspecting traffic and blocking malicious activity, helping reduce the risk of infection across the network.

Deep packet inspection to identify applications

Uses deep packet inspection to identify applications within network traffic, allowing administrators to apply basic application-level blocking and traffic shaping policies. This helps control bandwidth usage, prioritize critical applications, and maintain stable network performance under everyday workloads.

Web filtering

Manage access to websites by category, helping administrators reduce exposure to inappropriate or risky content and support basic security and usage policies across the network.

Threat report

Provides summarized visibility into detected security threats and related activities, helping administrators review events, understand potential risks, and support routine security monitoring.

Auto VPN

Simplified and secure VPN connectivity with centralized visibility and automated deployment.

IKEv2 site-to-site VPN

Establishes secure, encrypted tunnels between sites using the IKEv2 protocol, providing stable and reliable inter-site connectivity while supporting automatic tunnel negotiation and recovery.

Remote access VPN

Allows remote users to securely connect to the internal network through encrypted VPN tunnels, enabling safe access to network resources while working outside the office.

Auto provisioning from Nebula

Automatically provisions devices from the Nebula cloud platform and enables Nebula SD-VPN to establish secure connections between sites, simplifying deployment and reducing manual configuration across distributed networks.

Real-time VPN topology

Provides a real-time view of VPN tunnel status and site connectivity, helping administrators quickly understand VPN topology and monitor active connections across the network.

Wireless Made Easy

Simple and centralized wireless connectivity with consistent configuration and built-in access control.

Mesh to any Nebula AP

Supports wireless mesh connections to any Nebula-managed access point, enabling flexible deployment and extending network coverage without additional wired infrastructure.

Site-wide SSID provisioning from Nebula cloud

Allows administrators to centrally configure and deploy SSIDs across all access points at a site through the Nebula cloud, simplifying wireless setup and ensuring consistent network settings.

Captive portal

Provides a captive portal for wireless access and supports single sign-on with Microsoft Entra ID, allowing users to authenticate before connecting to the network.

Nebula centralized cloud management

Centralized cloud management that simplifies deployment, visibility, and control across the entire network.

Unified management of wireless, switching, security, and mobile router

Provides centralized cloud management for wireless, switching, security, and mobile router through the Nebula platform, enabling consistent configuration, monitoring, and simplified administration across the network.

Fast remote deployment without additional controllers

Enables rapid remote deployment through the Nebula cloud without requiring additional on-premises controllers, simplifying rollout and reducing infrastructure complexity.

Pre-configure without unboxing

Simplified onboarding process enabling zero-touch provisioning. By combining Bluetooth discovery with the Nebula App, the onboarding process is simplified—even for non-DHCP WAN connections.

Network Topology

Visualizes the network topology through the Nebula cloud, providing a clear view of device relationships and connectivity status while supporting easier monitoring across single or multiple sites.

Network Visibility

Provides centralized network visibility through the Nebula cloud, delivering real-time monitoring, alerts, and comprehensive insight across single or multiple sites to support efficient network operations.

Client info

Provides visibility into connected wireless and wired clients, allowing administrators to view client status and basic connection information for easier monitoring and management.

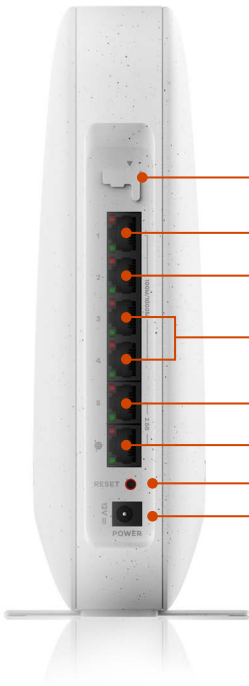
Download App



Q Zyxel Nebula Mobile



Hardware








Interfaces

- Console port
- 1 × 1 GbE LAN/IPTV port
- 1 × 1 GbE LAN/WAN port
- 2 × 1 GbE LAN ports
- 1 × 2.5 GbE LAN port
- 1 × 2.5 GbE WAN port
- Reset
- Power



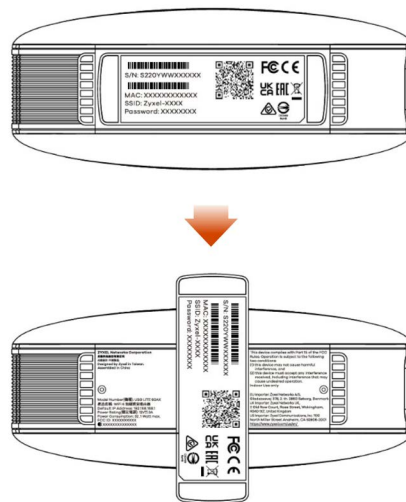
LED Legend

-  **Steady Green**
— Device Ready
-  **Fast Blinking Amber & Green**
— Device Booting
-  **Fast Blinking Red**
— Firmware Upgrading
-  **Slow Blinking Amber & Green**
— Cannot Connect to NCC
-  **Blinking Green**
— Not Registered to NCC



Desk Placement

Rotate the stand 90 degrees to ensure a stable placement.



Specifications

Physical Specifications	
Item	Dimensions (WxDxH)(mm/in.): 161.7 × 65 × 229 (6.37" x 2.56" x 9.02") Weight (g/lb.): 707/1.56
Hardware Specifications	
CPU	Quad-core, 2.00GHz
RAM/FLASH	1GB/512MB
Ethernet ports	Port 1 (100/1000 Mbps) : LAN / IPTV Port 2 (100/1000 Mbps) : LAN / WAN Port 3 & 4 (100/1000 Mbps) : LAN Port 5 (100/1000/2500 Mbps) : LAN Port Globe (100/1000/2500 Mbps) : WAN
System Capacity & Performance* ¹	
SPI firewall throughput LAN to WAN (Mbps)* ²	2,000
Bridge mode throughput (Mbps)	2,000
DPI throughput Application on (routing mode) (Mbps)	2,000
Throughput with threat management on (Mbps)	2,000
VPN throughput TCP single session (Mbps)	100
VPN throughput UDP 1424 (Mbps)* ³	300
Max. TCP concurrent sessions* ⁴	20,000
Max. gateway-to-gateway IPsec VPN tunnels	12
Max. remote VPN tunnels	5
Wireless	
Standard	IEEE802.11 ax/ac/n/g/b/a
MIMO	MU-MIMO
Wireless speed	2.4 GHz: 1150 Mbps 5 GHz: 4800 Mbps
Frequency band	Dual-band (2.4 GHz & 5 GHz)
Bandwidth	20-, 40-, 80-, and 160-MHz
Conducted typical transmit output power* ⁵	US (2.4GHz/5GHz): 29.98/29.82 dBm EU (2.4GHz/5GHz): 19.92/29.90 dBm
Wireless security	Open, WPA2-PSK, WPA3-Personal
SSID number	8
MESH Networking	Yes
No. of antenna	4 (internal)
Antenna gain	2.4Ghz: 3.65dBi, 4×4: 4SS 5Ghz: 4.63dBi, 4×4: 4SS

Environment

Operating	Temperature: 0°C to 40°C (32°F to 104°F) Humidity: 5% to 95% (Non-condensing)
Storage	Temperature: -30°C to 70°C (-22°F to 158°F) Humidity: 5% to 95% (Non-condensing)

Product Certifications

Certifications	CE, FCC, BSMI
-----------------------	---------------

All specifications are subject to change without notice.

*1: Actual performance may vary depending on system configuration, network conditions, and activated applications.

*2: Maximum throughput based on RFC 2544 (1,518-byte UDP packets).

*3: VPN throughput measurement are based on RFC 2544 (1,424-byte UDP packets).

*4: Maximum sessions are measured using the industry standard IXIA IxLoad testing tool.

*5: Maximum transmit power is limited by local regulatory settings.

For more product information, visit us on the web at www.zyxel.com

Copyright © 2026 Zyxel and/or its affiliates. All rights reserved.

All specifications are subject to change without notice.

