

ZyXEL



High Speed Wireless N 2.0 ADSL2+ Gateway for SOHO Networks

300Mbps
802.11n



- **ADSL2+ High Speed Internet Access**
- **Firewall with Stateful Packet Inspection (SPI) and Denial of Service (DoS) Prevention**
- **Eco friendly wireless. Hardware Wireless On/Off Button to Saves Energy by Eliminating the Wasting of Electricity**
- **Embedded QoS that Controls Different Types of Network Traffic to Optimize Time Sensitive Information**
- **WPS Button for Quick and Easy Wireless Security Setup**

Benefits

ADSL2+ Empowers Larger Internet Pipeline

The P-660HN series based on ADSL2+ standard which not only creates fast access to the Internet, but also maintains stable connections and enough bandwidth to surf the Internet. Steaming video/audio content and playing online-game simultaneously are more smooth and faster than traditional ADSL enabled gateways.

802.11n Technology for Extreme Performance and Coverage

The P-660HN series featuring 802.11n Draft 2.0 Technology provides the ultimate solution for speed and coverage. With data rate up to 300 Mbps, P-660HN series provides stable and reliable wireless connections for high speed data and multimedia delivery. It eliminates dead zones and extends coverage by using coming IEEE 802.11n technology and backwards compatible with any IEEE 802.11b/g Wi-Fi certified device.

Enhanced Security Features Forms Robust Protection

Enhanced security protection guards the traffic all the way through broadband to LAN. Dual Ethernet firewall (NAT and SPI) block hackers to easily locate target which greatly reduces the risk of being hacked. As the part of wireless security, P-660HN series supports not only WPA-2/WPA/WEK, but also hardware WPS button to realize easy-setup by just single click. Thus, to own a secure wireless network is not a headache anymore.

**802.11n Wireless ADSL2+
4-port Gateway**

P-660HN SERIES



ROUTER



Eco-friendly Wireless On/Off Button Empowers Easy Way to Save Energy

To respond to the concept of green earth, P-660HN series equips with wireless on/off button that assists users to easily manage energy consumption. By just one click to shut down wireless power, energy can be saved and utilized more efficiently when wire wireless communication is not used. At meanwhile, the wired communication is still on and won't be effected.

Embedded QoS Optimize Time-sensitive Applications

P-660HN series supports QoS features to shape traffic priority that maximizes the bandwidth utilization. It will make P-660HN more ideal for delivery of time-sensitive applications, like VoIP or video streaming.

Specifications

System Specifications

ADSL Compliance

- ITU 992.1 (G.dmt)
- ITU 992.3 ADSL2 (G.dmt.bis)
- ITU 992.5 ADSL2+
- Reach-Extended ADSL (RE ADSL)
- Annex L/M support

WLAN

- IEEE 802.11n compliance, backward compatible with 11b/g
- Frequency Operation: 2.4 GHz
- 64/128 bits WEP data encryption
- WPA/WPA2 (Wi-Fi Protected Access) Security
- Support IEEE 802.1x, External Radius server: EAP-MD5, TLS, TTLS, PEAP
- Wireless Scheduler
- Wi-Fi Multimedia (WMM)
- WPS (Wi-Fi Protected Setup)
- WDS (Wireless Distribution System)

Router

- NAT (Maximum 2048 sessions)
- SIP ALG pass-through
- NAT port forwarding
- PPPoE pass-through
- Dynamic DNS
- IP Alias
- DHCP Server/Client/Relay

- RIP I/RIP II support
- IGMP v1 and v2 support
- UPnP support
- 802.1Q/1P

Firewall

- Stateful Packet Inspection (SPI)
- Denial of Service (DoS) Prevention

Security

- Multiple VPN (IPSec, PPTP) pass-through
- Packet Filtering
- URL keyword blocking

Management

- Embedded Web Configuration
- TR-069 HTTPS support
- Logs and Statistics
- SNMP v1 and v2 with MIB II
- Remote Management Control: Telnet, FTP, Web, SNMP, and DNS
- CLI command via telnet/console

- Two 2 dbi fixed antennas
- LED displays
 - Power
 - Ethernet (1-4)
 - WLAN/WPS
 - DSL
 - Internet
- Power consumption: 9 Watt

Physical Specifications

- Item dimensions: 189 (W) x 131 (D) x 42 (H) mm (7.44 (W) x 5.16 (D) x 1.65 (H) inch)
- Item weight: 355 g (0.78 lb)
- Packing dimensions: 362 (W) x 201 (D) x 110 (H) mm (14.25 (W) x 7.91 (D) x 4.33 (H) inch)
- Packing Weight: 1,000 g (2.21 lb)

Environmental Specifications

- Operating temperature: 0°C ~ 40°C
- Storage temperature: -20°C ~ 60°C
- Operating humidity: 20% ~ 90% (non-condensing)
- Storage humidity: 20% ~ 90% (non-condensing)

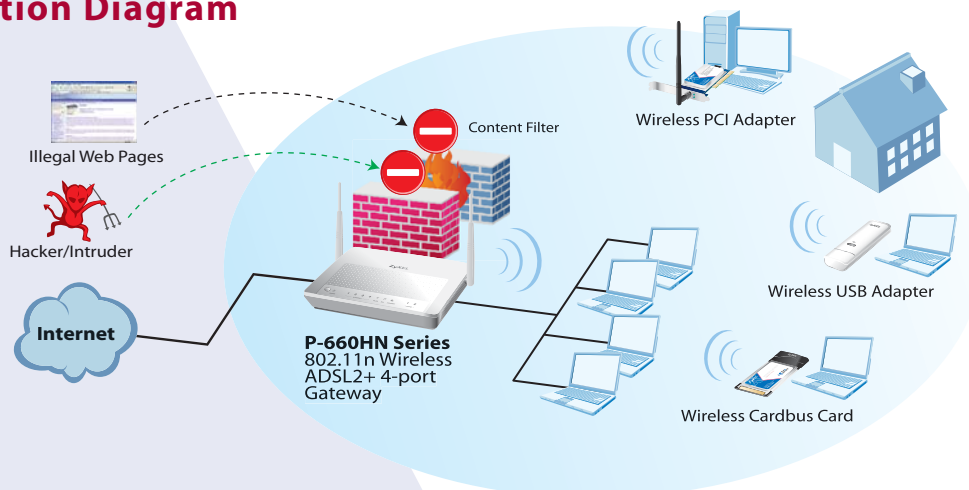
Certification

- Safety: CE (EN60950-1, IEC 60950-1)/UL/CSA
- EMI: FCC/CE/C-Tick

Hardware Specifications

- ADSL port: 1 x RJ-11
- Ethernet port: 4 x RJ-45
- Power input (12 VDC 1 A)
- Power switch button
- Reset button
- WPS and WLAN ON/OFF hardware button (coexisting)

Application Diagram



For more product information, visit us on the web at www.ZyXEL.com